



# KENWOOD PLACE

LAKEVILLE, MINNESOTA

SHEET	TITLE
C3.2A	STOCKPILE PLAN FOR LOT 1, BLOCK 2

DATE	ISSUE / REVISION	REVIEW
07/27/2016	INITIAL SUBMITTAL	ROH

BY	DATE
ROH	08/01/2016

I hereby certify that this plan was prepared by me, or under my direct supervision, and that I am a duly Licensed Professional Engineer under the laws of the state of Minnesota.

Signature of Professional Engineer: *[Signature]*  
Professional Engineer License No. 15277  
Date: 8/01/16

Signature of Professional Services, LLC: *[Signature]*  
Professional Services, LLC office and is available upon request.

IF THE SIGNATURE, SEAL OR FOUR LINES DIRECTLY ABOVE ARE NOT VISIBLE, THIS SHEET HAS BEEN REPRODUCED BEYOND INTENDED READABILITY AND IS NO LONGER A VALID DOCUMENT. PLEASE CONTACT THE ENGINEER TO REQUEST ADDITIONAL DOCUMENTS.

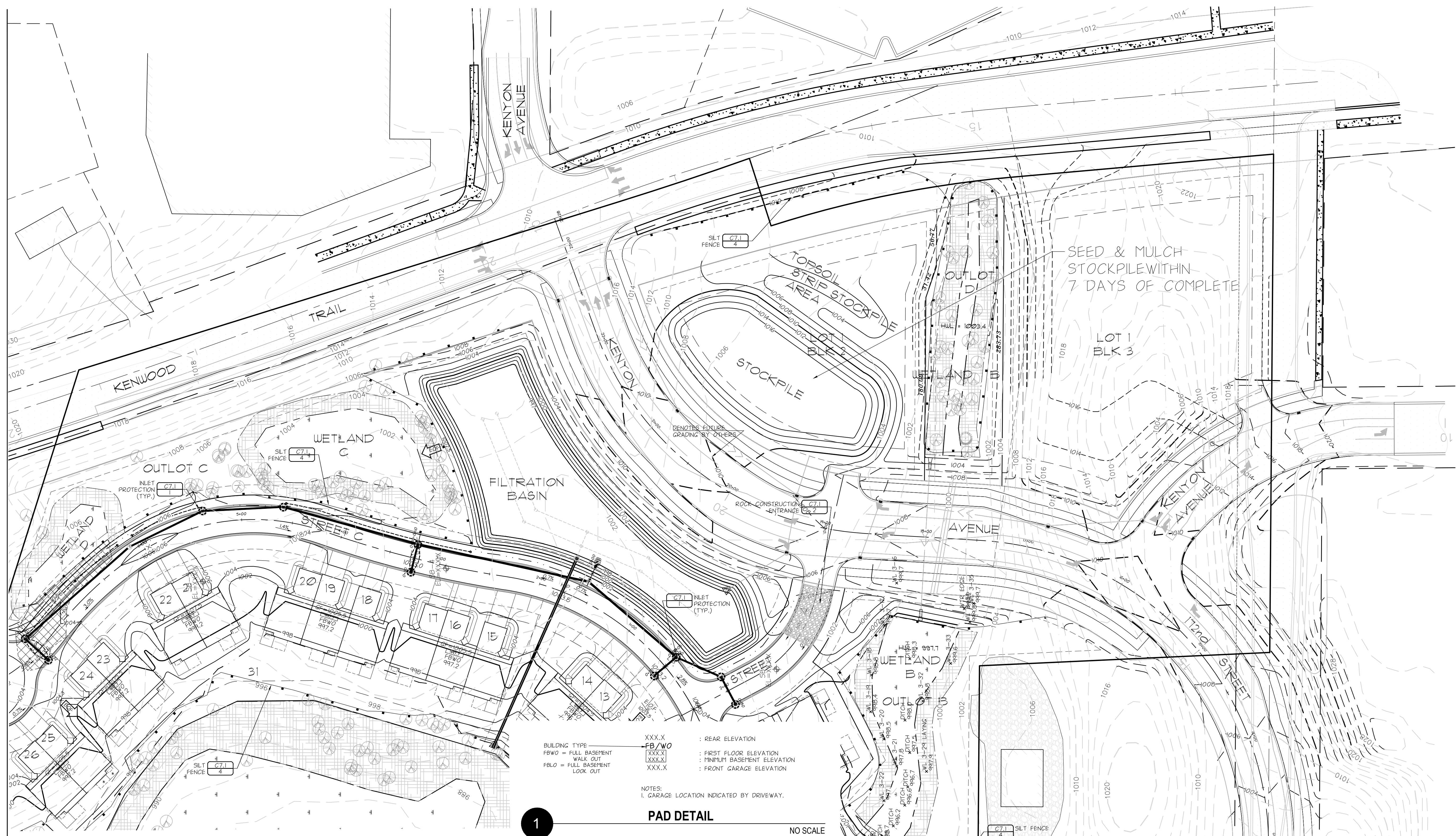
08-01-2016



105 South Fifth Avenue  
Suite 513  
Minneapolis, MN 55401

FILE NAME: C302AATL001.DWG  
PROJECT NO.: ATL16001

# C3.2A



BUILDING TYPE  
 FBWO = FULL BASEMENT WALK OUT  
 FBLO = FULL BASEMENT LOOK OUT

XXX.X : REAR ELEVATION  
 XXX.X : FIRST FLOOR ELEVATION  
 XXX.X : MINIMUM BASEMENT ELEVATION  
 XXX.X : FRONT GARAGE ELEVATION

NOTES:  
 1. GARAGE LOCATION INDICATED BY DRIVEWAY.

### PAD DETAIL

NO SCALE

### GRADING NOTES

- CONTACT UTILITY SERVICE PROVIDERS FOR FIELD LOCATION OF SERVICES 72 HOURS PRIOR TO BEGINNING GRADING.
- REMOVE TOPSOIL FROM GRADING AREAS AND STOCKPILE SUFFICIENT QUANTITY FOR REUSE. MATERIALS MAY BE MINED FROM LANDSCAPE AREAS FOR USE ON SITE AND REPLACED WITH EXCESS ORGANIC MATERIAL WITH PRIOR OWNER APPROVAL.
- REMOVE SURFACE AND GROUND WATER FROM EXCAVATIONS. PROVIDE INITIAL LIFTS OF STABLE FOUNDATION MATERIAL IF EXPOSED SOILS ARE WET AND UNSTABLE.
- REFER TO STRUCTURAL SPECIFICATIONS FOR EARTHWORK REQUIREMENTS FOR BUILDING PADS.
- AN INDEPENDENT TESTING FIRM SHALL VERIFY THE REMOVAL OF ORGANIC AND UNSUITABLE SOILS, SOIL CORRECTION, AND COMPACTION AND PROVIDE PERIODIC REPORTS TO THE OWNER.
- PLACE AND COMPACT FILL USING LIFT THICKNESSES MATCHED TO SOIL TYPE AND COMPACTION EQUIPMENT TO OBTAIN SPECIFIED COMPACTION THROUGHOUT THE LIFT.
- COMPACT MATERIAL IN PAVED AREAS TO 95% OF MAXIMUM DRY DENSITY, STANDARD PROCTOR (ASTM D698) EXCEPT THE TOP 3 FEET WHICH SHALL BE COMPACTED TO 100%. COMPACT TO 98% DENSITY WHERE FLL DEPTH EXCEEDS 10 FEET.

### EROSION PREVENTION AND SEDIMENT CONTROL NOTES

- INSTALL PERIMETER SEDIMENT CONTROLS PRIOR TO BEGINNING WORK AND MAINTAIN FOR DURATION OF CONSTRUCTION. REMOVE CONTROLS AFTER AREAS CONTRIBUTING RUNOFF ARE PERMANENTLY STABILIZED AND DISPOSE OF OFF SITE.
- LIMIT SOIL DISTURBANCE TO THE GRADING LIMITS SHOWN. SCHEDULE OPERATIONS TO MINIMIZE LENGTH OF EXPOSURE OF DISTURBED AREAS.
- MANAGEMENT PRACTICES SHOWN ARE THE MINIMUM REQUIREMENT. INSTALL AND MAINTAIN ADDITIONAL CONTROLS AS WORK PROCEEDS TO PREVENT EROSION AND CONTROL SEDIMENT CARRIED BY WIND OR WATER.
- EXCAVATE PONDS EARLY IN THE CONSTRUCTION SEQUENCE. REMOVE SEDIMENT FROM PONDS PERIODICALLY AND AFTER AREAS CONTRIBUTING RUNOFF ARE PERMANENTLY STABILIZED.
- CONTRACTOR SHALL PREVENT SEDIMENT LADEN WATER FROM ENTERING THE INFILTRATION SYSTEM UNTIL THE SITE IS COMPLETELY STABILIZED.
- ALL EXPOSED SOIL AREAS MUST BE STABILIZED WITHIN 72 HOURS OF COMPLETION OF WORK IN EACH AREA. (E WITHIN 1 MILE OF IMPAIRED WATER USE THE FOLLOWING NOTE INSTEAD) ALL EXPOSED SOILS AREAS SHALL BE STABILIZED IMMEDIATELY TO LIMIT SOIL EROSION IN THAT PORTION OF THE SITE WHERE CONSTRUCTION HAS TEMPORARILY OR PERMANENTLY CEASED.
- SEED, SOD, MULCH AND FERTILIZER SHALL MEET THE FOLLOWING SPECIFICATIONS, AS MODIFIED.
 

ITEM	SPECIFICATION NUMBER
SOD	MNDOT 3878
SEED	MNDOT 3876
MN TYPE 22-III @ 30.5 LB/AC - TEMPORARY EROSION CONTROL	
MN TYPE 25-15I @ 120 LB/AC - PERMANENT TURF	
MULCH (MNDOT TYPE I @ 2 TON/AC, DISC ANCHORED) MNDOT 3882	
FERTILIZER MNDOT 3881 \ MNDOT 2575	
- SEE LANDSCAPE SHEETS FOR PERMANENT TURF AND LANDSCAPE ESTABLISHMENT.
- HYDRAULIC MULCHING AND OTHER PRACTICES MUST BE USED ON SLOPES OF 3:1 OR STEEPER TO PROVIDE ADEQUATE STABILIZATION.
- AT LEAST SIX INCHES OF TOPSOIL OR ORGANIC MATTER MUST BE SPREAD AND INCORPORATED INTO THE UNDERLYING SOIL DURING FINAL SITE TREATMENT WHEREVER TOPSOIL HAS BEEN REMOVED.
- THE CONTRACTOR MUST, AT A MINIMUM INSPECT, MAINTAIN, AND REPAIR ALL DISTURBED SURFACES AND ALL EROSION AND SEDIMENT CONTROL FACILITIES AND SOIL STABILIZATION MEASURES EVERY DAY WORK IS PERFORMED ON THE SITE AND AT LEAST WEEKLY UNTIL LAND-DISTURBING ACTIVITY HAS CEASED. THEREAFTER, THE CONTRACTOR MUST PERFORM THESE RESPONSIBILITIES AT LEAST WEEKLY UNTIL VEGETATIVE COVER IS ESTABLISHED.

### RETAINING WALL NOTES

- INSTALL FENCE WHERE WALL EXCEEDS 4 FEET IN HEIGHT
- FIELD STONE/BOULDER RETAINING WALL. SEE DETAIL 5, SHEET 7.1

### LEGEND

SYMBOL	DESCRIPTION	ESTIMATED QUANTITY:
	INLET PROTECTION	
	SILT FENCE	
	VEHICLE TRACKING PAD	
	CONSTRUCTION LIMITS	
	TREE PROTECTION FENCE	
	TOP OF WALL	
	BOTTOM OF WALL	
	BOULDER RETAINING WALL	



Know what's Below.  
Call before you dig.

