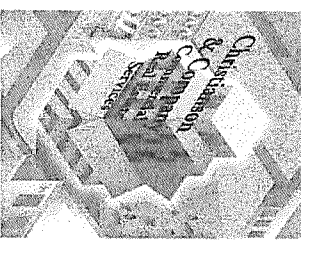
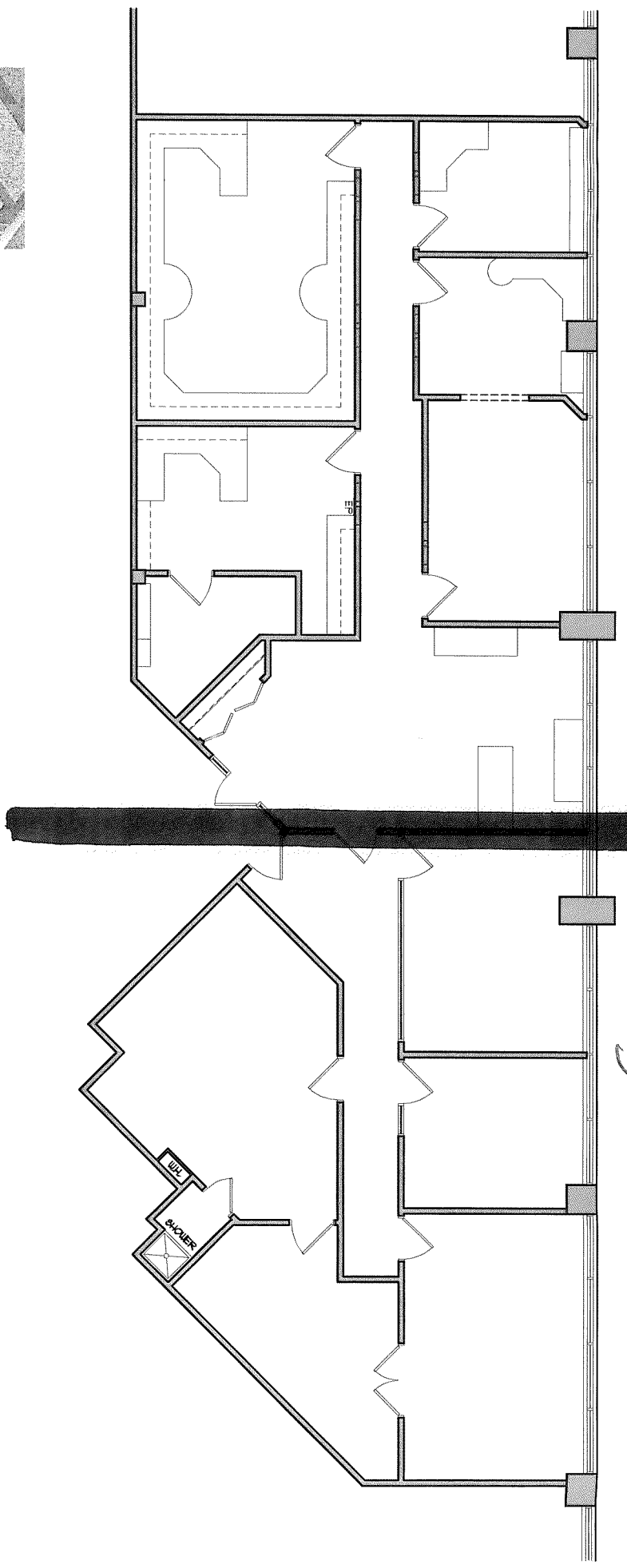


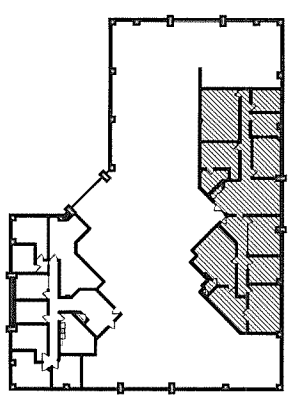
A = 1,836

B = 1,531



LEASING INFORMATION:
 Nancy Hick
 952.844.2174

BUILDING KEY - SECOND FLOOR



GENESIS
 ARCHITECTURE

4350 Baker Road, Suite 400
 Minneapolis, MN 55343
 952.897.7874 Fax: 952.897.7740

SUITE: 205
 SHADY OAK CENTER
 6409 CITY WEST PARKWAY
 EDEN PRAIRIE, MN 55344
 3,367 RSF

SCALE: 3/32" = 1'-0"
 JOB: _____
 REVISION: _____
 DATE: _____

DRAWN BY: JLN
 DATE: 22 APR 09

A-1