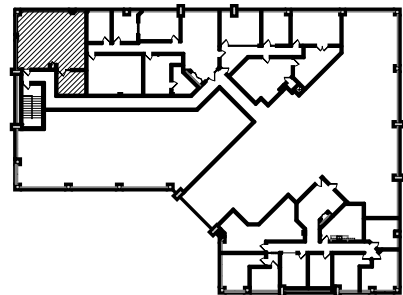


LEASING INFORMATION:
 Nancy Flicek
 952.844.2174

BUILDING KEY - SECOND FLOOR



4350 Baker Road, Suite 400
 Minnetonka, MN 55343
 952.897.7874 Fax: 952.897.7740

SUITE: 208
 SHADY OAK CENTER
 6409 CITY WEST PARKWAY
 EDEN PRAIRIE, MN 55344
 896 RSF

SCALE: 3/32" = 1'-0"
 JOB:
 REVISION: _____ DATE _____

DRAWN BY: JLN
 DATE: 21 DEC 09

A-1